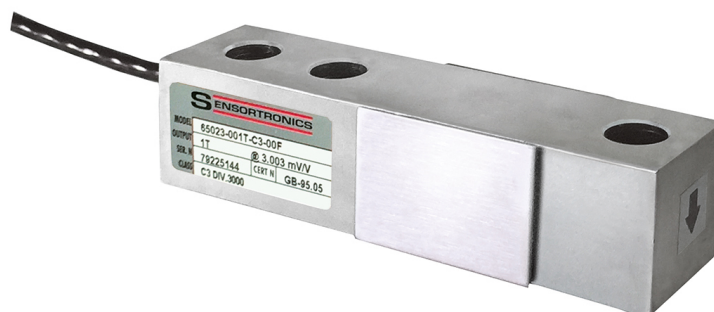


General information

PWS1320240320

The 65023 shear beam load cell, made of nickel-plated steel and stainless steel, has watertight protection for use in harsh environmental conditions, excellent linearity and precision characteristics and is resistant to 100% side loads. The 65023 shear beam load cell was designed for weighing hoppers and tanks and for the construction of low-profile platforms. The 65023 shear load cell is also available in a special high temperature version. In addition, there are mounting accessories available to facilitate the cell installation: MKX and MH MOUNTING KIT.



Suggested related products

A highly performing weighing system must be accurate, perfectly calibrated and well maintained. In order to improve the load cell performance and to optimize its functioning, you may need the following products:

Weight Transmitter [DAT 1400](#)

Weight Indicator [MCT 1302](#)

Mounting kits [MKX ®](#)

Mounting kits [MH MOUNTING KIT](#)

Tester 1008 [TESTER 1008](#)

Junction Box [CGS4-C](#)

All indicated data may be changed without notice.
All the measures indicated are expressed in millimeters (mm).

Technical specifications

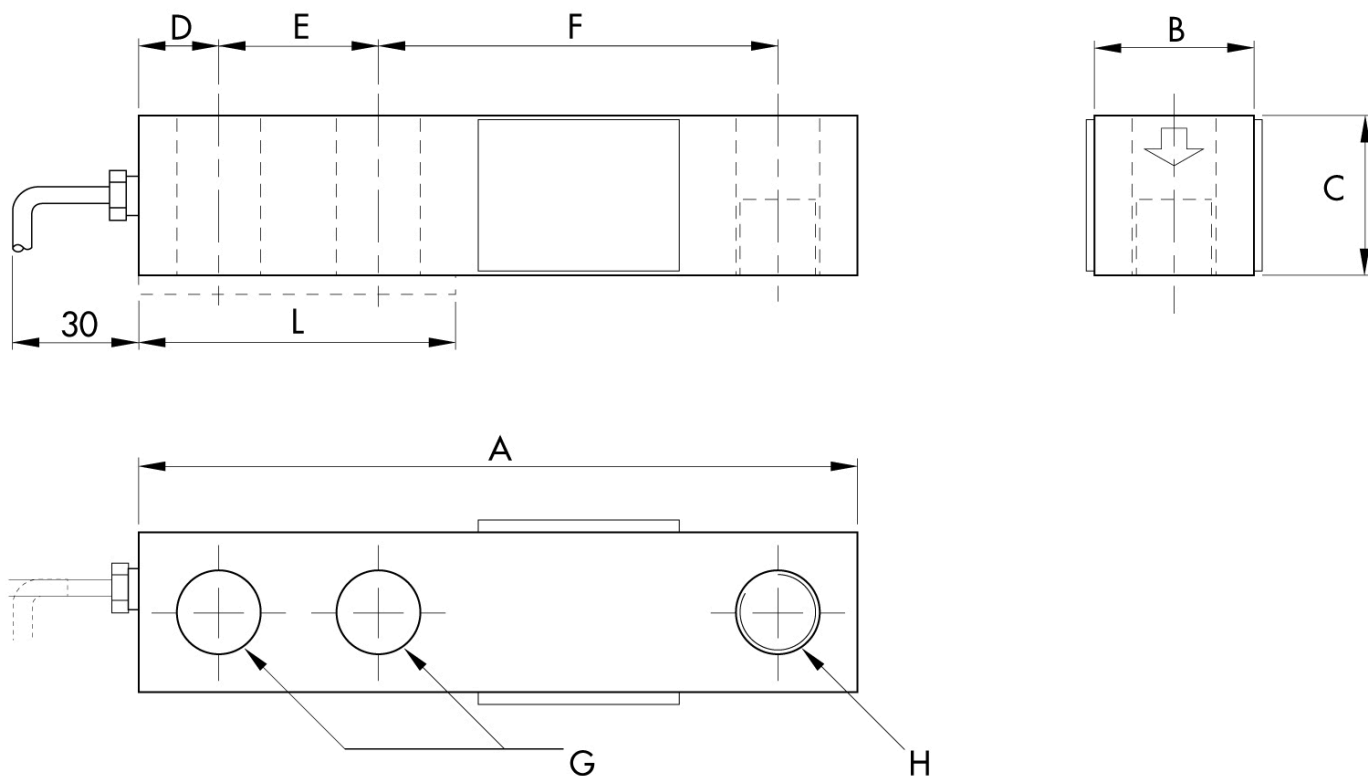
PWS1320240320

| | |
|--|---|
| Rated load (RL): | 125, 250, 500, 750, 1000, 1500, 2000, 3000, 5000 Kg |
| Combined error: | ± 0.02 % RO |
| Repeatability: | ± 0.01 % RO |
| Creep (20 minutes): | ±0.017 % RO |
| Safe overload: | 150 % RL |
| Ultimate overload: | 300 % RL |
| Clamping force without any load: | RL 125 ÷ 2000 kg: 136 Nm; RL 3000÷5000kg: 205 Nm |
| Material: | Nickel steel, stainless steel |
| Degree of protection: | IP67 |
| Accuracy class: | 3000 OIML (500÷5000 Kg) |
| Deflection: | 0.33 ÷ 0.89 mm |
| Compensated Temperature: | -10 ÷ +40°C |
| Temperature range: | -18 ÷ +65°C |
| Temperature effect on zero balance: | ±0.018 % RO/10°C |
| Temperature effect on output: | ±0.012% of output/10°C |
| Rated output RO: | 3 mV/V ± 0.25% |
| Zero balance: | ±1 % RO |
| Insulation resistance: | > 1000 M Ohm |
| Input resistance: | 343 ÷ 357 Ohm |
| Output resistance: | 349 ÷ 355 Ohm |
| Recommended input: | 5 ÷ 15 Vdc/Vac |

All indicated data may be changed without notice.
All the measures indicated are expressed in millimeters (mm).

Shear beam load cells **65023**

available with certification • EAC • OIML • NTEP • FM



Electrical Connections

| | |
|-------------|--------------|
| +Excitation | Red |
| -Excitation | Black |
| +Signal | Green |
| -Signal | White |
| Shield | Cable Shield |

CAPACITY kg

| | 125-250 | 500-2000 | 3000-5000 |
|---|----------|----------|-----------|
| A | 130 | 130 | 171.5 |
| B | 31 | 31 | 38.1 |
| C | 25.4 | 31 | 38.1 |
| D | 15.8 | 15.8 | 19.1 |
| E | 25.4 | 25.4 | 38.1 |
| F | 76.2 | 76.2 | 95.3 |
| G | 13.5 | 13.5 | 20.6 |
| H | M12x1.75 | M12x1.75 | M20x2.5 |
| L | 57 | 57 | 76 |

All indicated data may be changed without notice.
All the measures indicated are expressed in millimeters (mm).