

## General information

PWS3920240318

The off center load cell PS19 is made of stainless steel and has been designed for the construction of scales for electromedical equipment and for dosing systems. The single point cell PS19 can be customized: the load capacity can vary from 250 kg to 400 kg and the dimensions of the plate can vary from 600 x 600 mm to 800 x 800 mm for cells with a high load capacity.



## Suggested related products

A highly performing weighing system must be accurate, perfectly calibrated and well maintained. In order to improve the load cell performance and to optimize its functioning, you may need the following products:

**Weight Transmitter** [UWT 6008](#)

**Weight Transmitter** [DAT 1400](#)

**Weight Indicator** [MCT 1302](#)

**Tester 1008** [TESTER 1008](#)

**Off Center load cell** [CB14](#)

**Junction Box** [CGS4-C](#)

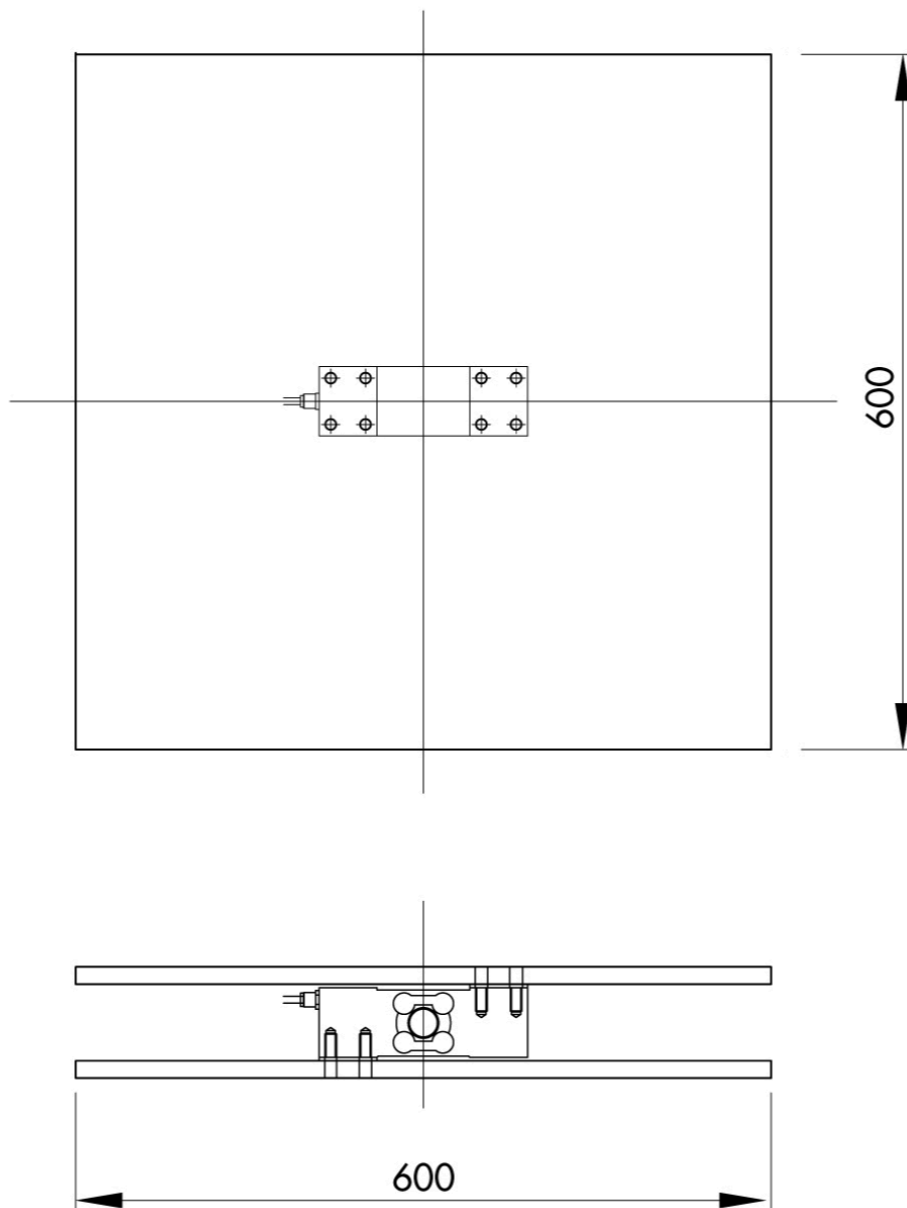
All indicated data may be changed without notice.  
All the measures indicated are expressed in millimeters (mm).

## Technical specifications

PWS3920240318

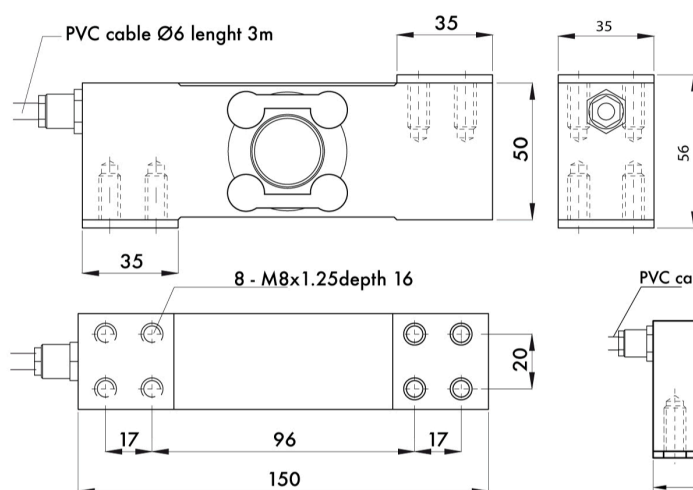
<b>Rated load (RL):</b>	15, 20, 30, 50, 75, 120, 200, 250, 350, 400 Kg
<b>Combined error:</b>	< $\pm 0.017$ % RO
<b>Repeatability:</b>	< $\pm 0.010$ % RO
<b>Creep (30 minutes):</b>	$\pm 0.016$ % RO
<b>Safe overload:</b>	150 % RL
<b>Ultimate overload:</b>	200 % RL
<b>Material:</b>	Stainless steel
<b>Degree of protection:</b>	IP68
<b>Accuracy class:</b>	3000 OIML
<b>Deflection:</b>	0.3 ÷ 0.5 mm
<b>Compensated Temperature:</b>	-10 ÷ +40 °C
<b>Temperature range:</b>	-20 ÷ +70 °C
<b>Temperature effect on zero balance:</b>	< $\pm 0.01$ % RO/5°K
<b>Temperature effect on output:</b>	< $\pm 0.006$ % on output/5°K
<b>Rated output RO:</b>	2.0 $\pm$ 0.2 mV/V
<b>Zero balance:</b>	< $\pm 2$ % RO
<b>Insulation resistance:</b>	> 5000 MOhm
<b>Input resistance:</b>	400 $\pm$ 20 Ohm
<b>Output resistance:</b>	350 $\pm$ 3 Ohm
<b>Recommended input:</b>	5 ÷ 15 Vcc/ca

All indicated data may be changed without notice.  
 All the measures indicated are expressed in millimeters (mm).

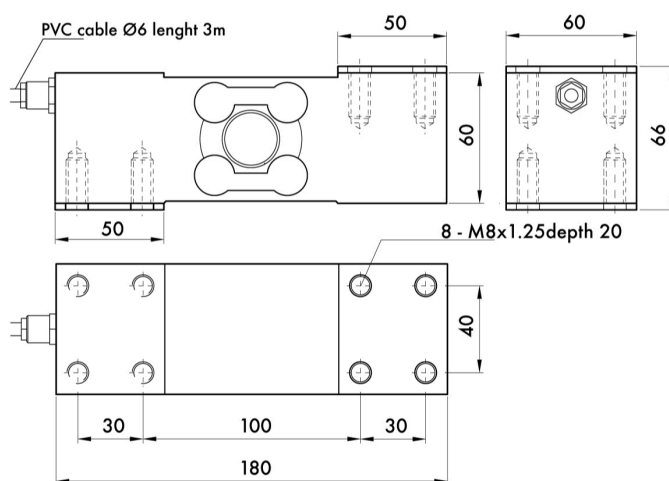

**Electrical Connection**

+Excitation	Green
-Excitation	Black
+Signal	Red
-Signal	White
+Sense	Blue
-Sense	Yellow
Shield	Cable Shield

All indicated data may be changed without notice.  
 All the measures indicated are expressed in millimeters (mm).



**Capacity 15 ÷ 350 Kg**



**Capacity 250 ÷ 400 Kg**

All indicated data may be changed without notice.  
All the measures indicated are expressed in millimeters (mm).